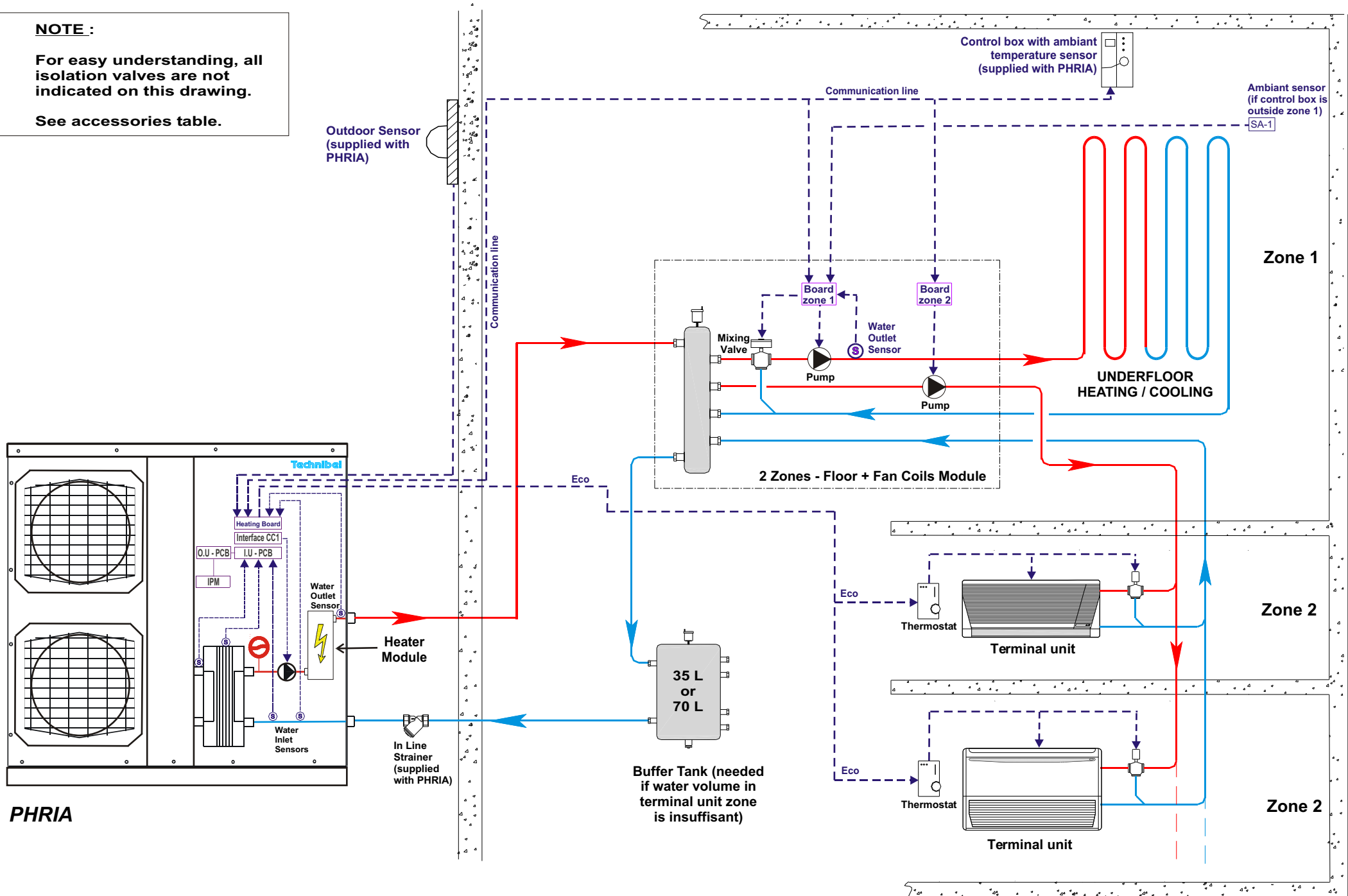


NOTE :

For easy understanding, all isolation valves are not indicated on this drawing.

See accessories table.



PHRIA



REV	DATE	MODIFICATION	DRG by	1097043G
00	27/01/2010	Creation	CP	

**INVERTER AWHP (PHRIA)
WITH INTEGRATED ELECTRIC SUPPORT HEATER
APPLICATION 2 ZONES COMBINATION
UNDERFLOOR + TERMINAL UNITS**

DRG by	DATE
CP	27/01/2010
CKD by	DATE
PB	